



# ARMADA CODEX™

## DEMO



## HÄGEHÜMO SALVAGE SHIP

Ryan Wolfe

01:09

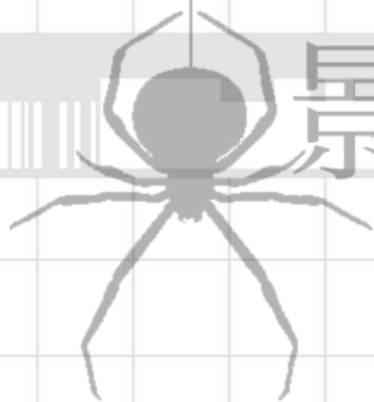
# 0-hr: Kagekumo - demo document

by Ryan Wolfe of "zero hour" art & technology

0-hr.com

Copyright © 2019 by Ryan Wolfe

This material may not be distributed without permission of the author.



## 影蜘蛛

The purpose of this document is to show you what you can expect should you choose to invest in this issue of the *0-hr: Armada Codex*. Specifically, this is what is shown:

- **Page 2: Main Book.** An overview of the ship, components, and statistics is provided. The stats are generic descriptions and not from any particular game system. Each area of each vessel is enumerated and described. Rendered images are included throughout.
- **Page 3: Maps.** Map books provide tactical maps (1 inch = 5 ft.) for the interior areas of the ship. The pages are designed to be printed out and laid edge to edge. Layers are used so that certain map elements (like the grid, cargo, or the black and white version of the map) may be toggled on and off as desired. Complete deckplans are also presented in a single giant image, layered so that the grid, black and white version, and so on can be toggled on or off. It includes a light background good for printing, and a dark background good for display on a computer or with a projector.
- **Page 4:** This is a sample page from the map book, with the layers active.
- **Page 5:** The Kagekumo issue includes two variants as well as the base salvage ship. Rendered images of these are shown here. Additional sample art is also on page 6.
- **Page 7:** This is a copy of the product overview text from the sales web page.

Thank you for taking the time to explore this product line. I hope that these ships can find a place in your campaign!



# ARMADA CODEX

## HASEKUMO SALVAGE SHIP

### Kensho

Character: Kensho  
 Species: Human  
 Gender: Male  
 Age: 28  
 Height: 1.8m  
 Weight: 75kg  
 Blood Type: A  
 Hobbies: Reading, Fishing  
 Skills: Pilot, Engineer  
 Equipment: Standard Issue  
 Status: Active

### MAK-013

MAK-013 is a standard mobile suit used by the Hasekumo Salvage Ship. It is equipped with a standard beam rifle and a shield.

### MAK-013

MAK-013 is a standard mobile suit used by the Hasekumo Salvage Ship. It is equipped with a standard beam rifle and a shield.

### KEMUSHI

Character: Kemushi  
 Species: Insect  
 Gender: Male  
 Age: 25  
 Height: 1.5m  
 Weight: 60kg  
 Blood Type: B  
 Hobbies: Collecting, Gardening  
 Skills: Pilot, Engineer  
 Equipment: Standard Issue  
 Status: Active

### KEMUSHI

KEMUSHI is a mobile suit designed for reconnaissance and support. It features a compact design with multiple sensors and a beam rifle.

### MAK-013

MAK-013 is a standard mobile suit used by the Hasekumo Salvage Ship. It is equipped with a standard beam rifle and a shield.

### MAK-013

MAK-013 is a standard mobile suit used by the Hasekumo Salvage Ship. It is equipped with a standard beam rifle and a shield.

### MAK-013

MAK-013 is a standard mobile suit used by the Hasekumo Salvage Ship. It is equipped with a standard beam rifle and a shield.

### MAK-013

MAK-013 is a standard mobile suit used by the Hasekumo Salvage Ship. It is equipped with a standard beam rifle and a shield.

### MAK-013

MAK-013 is a standard mobile suit used by the Hasekumo Salvage Ship. It is equipped with a standard beam rifle and a shield.

### HACHI

HACHI is a mobile suit designed for reconnaissance and support. It features a compact design with multiple sensors and a beam rifle.

### MAK-013

MAK-013 is a standard mobile suit used by the Hasekumo Salvage Ship. It is equipped with a standard beam rifle and a shield.

### MAK-013

MAK-013 is a standard mobile suit used by the Hasekumo Salvage Ship. It is equipped with a standard beam rifle and a shield.

### MAK-013

MAK-013 is a standard mobile suit used by the Hasekumo Salvage Ship. It is equipped with a standard beam rifle and a shield.

### MAK-013

MAK-013 is a standard mobile suit used by the Hasekumo Salvage Ship. It is equipped with a standard beam rifle and a shield.

### MAK-013

MAK-013 is a standard mobile suit used by the Hasekumo Salvage Ship. It is equipped with a standard beam rifle and a shield.

### XUANGUAN

XUANGUAN is a mobile suit designed for reconnaissance and support. It features a compact design with multiple sensors and a beam rifle.

### MAK-013

MAK-013 is a standard mobile suit used by the Hasekumo Salvage Ship. It is equipped with a standard beam rifle and a shield.

### MAK-013

MAK-013 is a standard mobile suit used by the Hasekumo Salvage Ship. It is equipped with a standard beam rifle and a shield.

### MAK-013

MAK-013 is a standard mobile suit used by the Hasekumo Salvage Ship. It is equipped with a standard beam rifle and a shield.

### MAK-013

MAK-013 is a standard mobile suit used by the Hasekumo Salvage Ship. It is equipped with a standard beam rifle and a shield.

### MAK-013

MAK-013 is a standard mobile suit used by the Hasekumo Salvage Ship. It is equipped with a standard beam rifle and a shield.

### MAK-013

MAK-013 is a standard mobile suit used by the Hasekumo Salvage Ship. It is equipped with a standard beam rifle and a shield.

### KAGEKUMO

Character: Kagekumo  
 Species: Human  
 Gender: Male  
 Age: 30  
 Height: 1.9m  
 Weight: 80kg  
 Blood Type: O  
 Hobbies: Reading, Fishing  
 Skills: Pilot, Engineer  
 Equipment: Standard Issue  
 Status: Active

### MAK-013

MAK-013 is a standard mobile suit used by the Hasekumo Salvage Ship. It is equipped with a standard beam rifle and a shield.

### MAK-013

MAK-013 is a standard mobile suit used by the Hasekumo Salvage Ship. It is equipped with a standard beam rifle and a shield.

### MAK-013

MAK-013 is a standard mobile suit used by the Hasekumo Salvage Ship. It is equipped with a standard beam rifle and a shield.

### MAK-013

MAK-013 is a standard mobile suit used by the Hasekumo Salvage Ship. It is equipped with a standard beam rifle and a shield.

### MAK-013

MAK-013 is a standard mobile suit used by the Hasekumo Salvage Ship. It is equipped with a standard beam rifle and a shield.

### MAK-013

MAK-013 is a standard mobile suit used by the Hasekumo Salvage Ship. It is equipped with a standard beam rifle and a shield.

### MAK-013

MAK-013 is a standard mobile suit used by the Hasekumo Salvage Ship. It is equipped with a standard beam rifle and a shield.

### MAK-013

MAK-013 is a standard mobile suit used by the Hasekumo Salvage Ship. It is equipped with a standard beam rifle and a shield.

### MAK-013

MAK-013 is a standard mobile suit used by the Hasekumo Salvage Ship. It is equipped with a standard beam rifle and a shield.

### MAK-013

MAK-013 is a standard mobile suit used by the Hasekumo Salvage Ship. It is equipped with a standard beam rifle and a shield.

### MAK-013

MAK-013 is a standard mobile suit used by the Hasekumo Salvage Ship. It is equipped with a standard beam rifle and a shield.

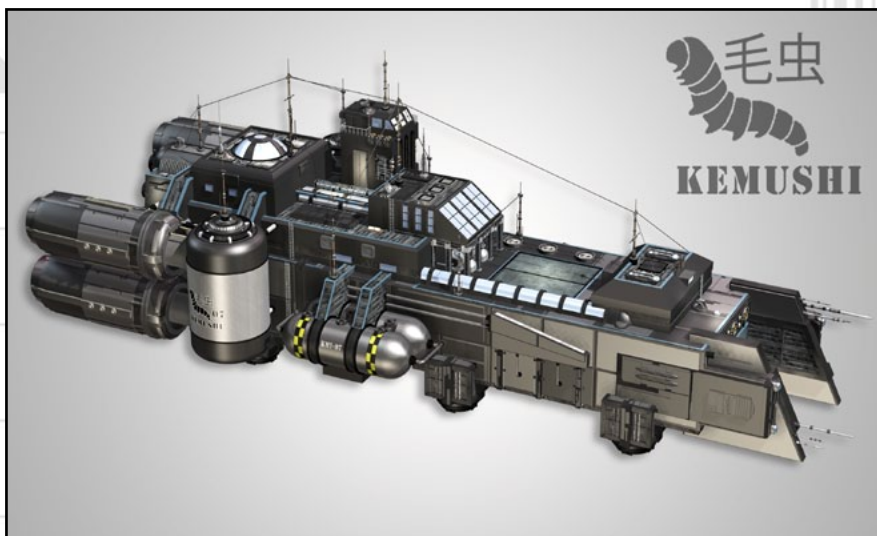
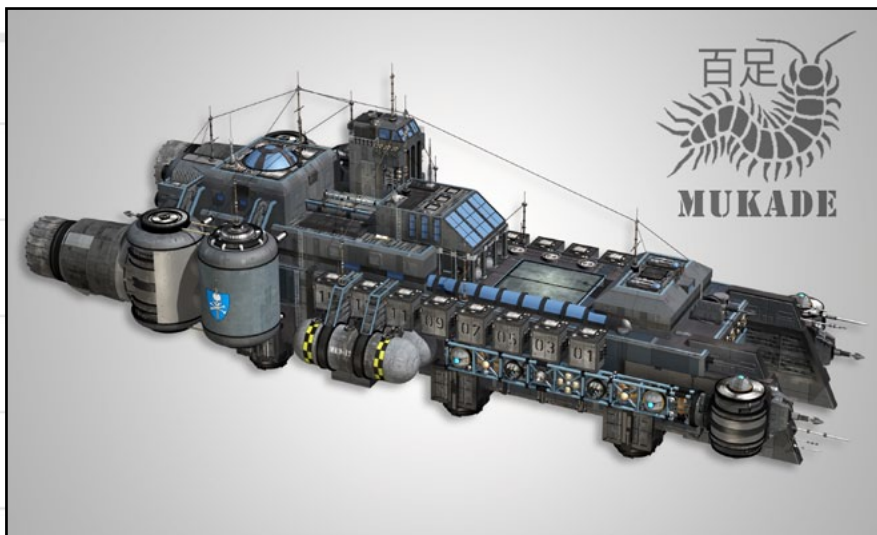
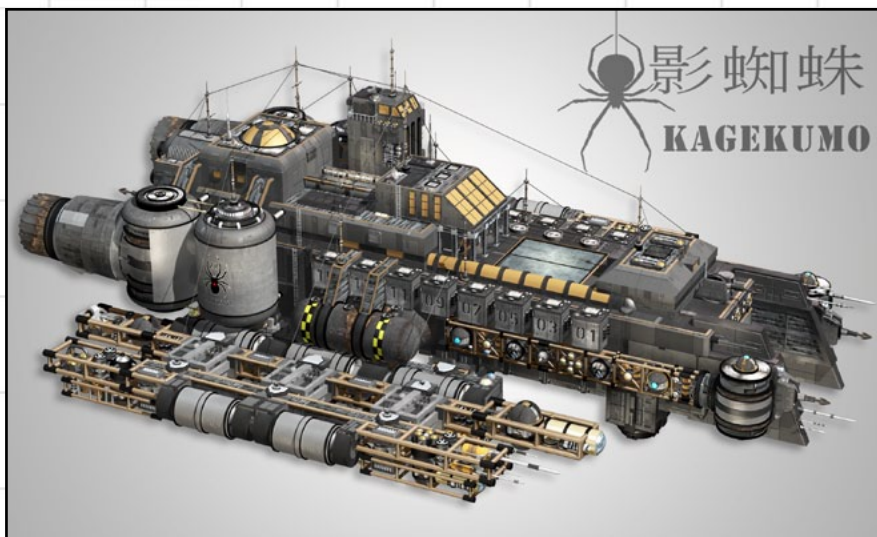
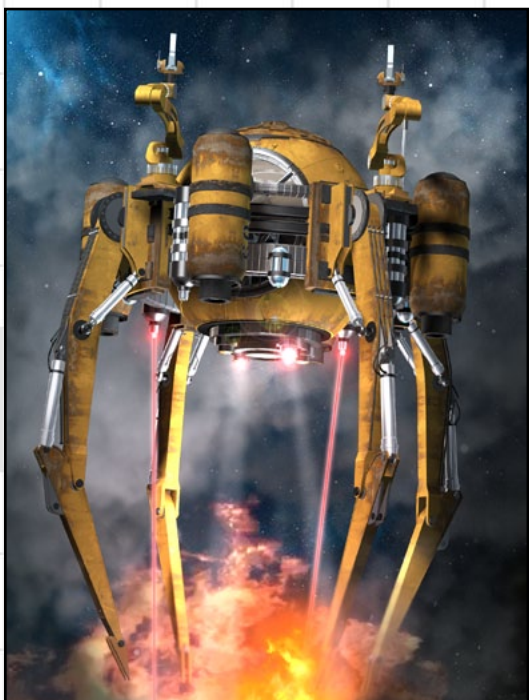


















## 0-hr Armada Codex

### Kagekumo

The Kagekumo (or “Shadow spider”) class is a salvage ship. Though ostensibly designed for commercial use, this large industrial craft has become a favorite of pirates and reavers. The vessel is designed to secure and dismantle derelicts, or soon-to-be-derelicts, quickly and efficiently. She is equipped with massive harpoons fore and aft to capture and tow disabled prey, plus fold-out scaffolding studded with tractor beams and cutting lasers to embrace, immobilize, and dissect. A cadre of salvage drones can assist with disassembly or help bring down stubborn targets. She carries a standard crew of 46, though this can easily vary by plus or minus 20.

In addition to the Kagekumo-class heavy salvage ship, two variants are also presented: the Mukade (“Centipede”) which lacks the cumbersome lower scaffolding but retains the remaining salvage gear, and the Kemushi (“Caterpillar”) which has no salvaging equipment at all and is intended for use as a bulk freighter. The document also details the auxiliary craft carried by these ships, including the Hachi-class salvage drones, plus various escape pods, life boats, and a repurposed shuttle.

The Kagekumo chapter of the Codex contains several detailed, layered PDF files:

- Main Book
  - A 32 page PDF file detailing the ship and interior areas, plus the variants and small craft.
  - Contains 3D rendered scenes as well as orthographic views of the ships.
  - Includes system independent statistics designed for easy adaptation to your game of choice.
  - Background, art, and text are on different layers for custom display and printing.
- Map Pages
  - Two PDF files (56 total pages) containing complete interior maps and instructions for assembly.
  - Miniature-scale maps for tactical combat with an optional 1 inch = 5 ft grid.
  - Divided into pages for easy printing in full color or printer-friendly black and white.
  - Selectable layers include: grid, black & white version, and optional objects.
- Uncut Map Images
  - Three single-page PDF files containing giant images of the deckplans.
  - Includes layers for grid, black & white version, optional cargo, and light or dark background.
  - Maps are 39x73, 23x73, and 23x73 inches at 150 dpi. Also provided as flat jpeg images.

Sample documents and art are available at **0-hr.com**.

This ship can serve as a legitimate salvage enterprise or a nefarious scavenger waiting in ambush. It could also be a mobile repair station, a construction dock, or even a mining ship. Whatever it’s role, Kagekumo is ready to salvage your campaign today!