



ARMADA CODEX™

DEMO



ULYSSES SURVEY SHIP

0-hr: Ulysses - demo document

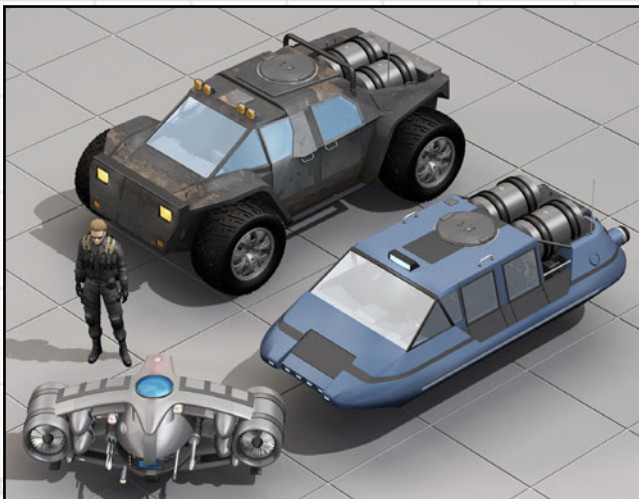
by Ryan Wolfe of "zero hour" art & technology

0-hr.com

Copyright © 2022 by Ryan Wolfe

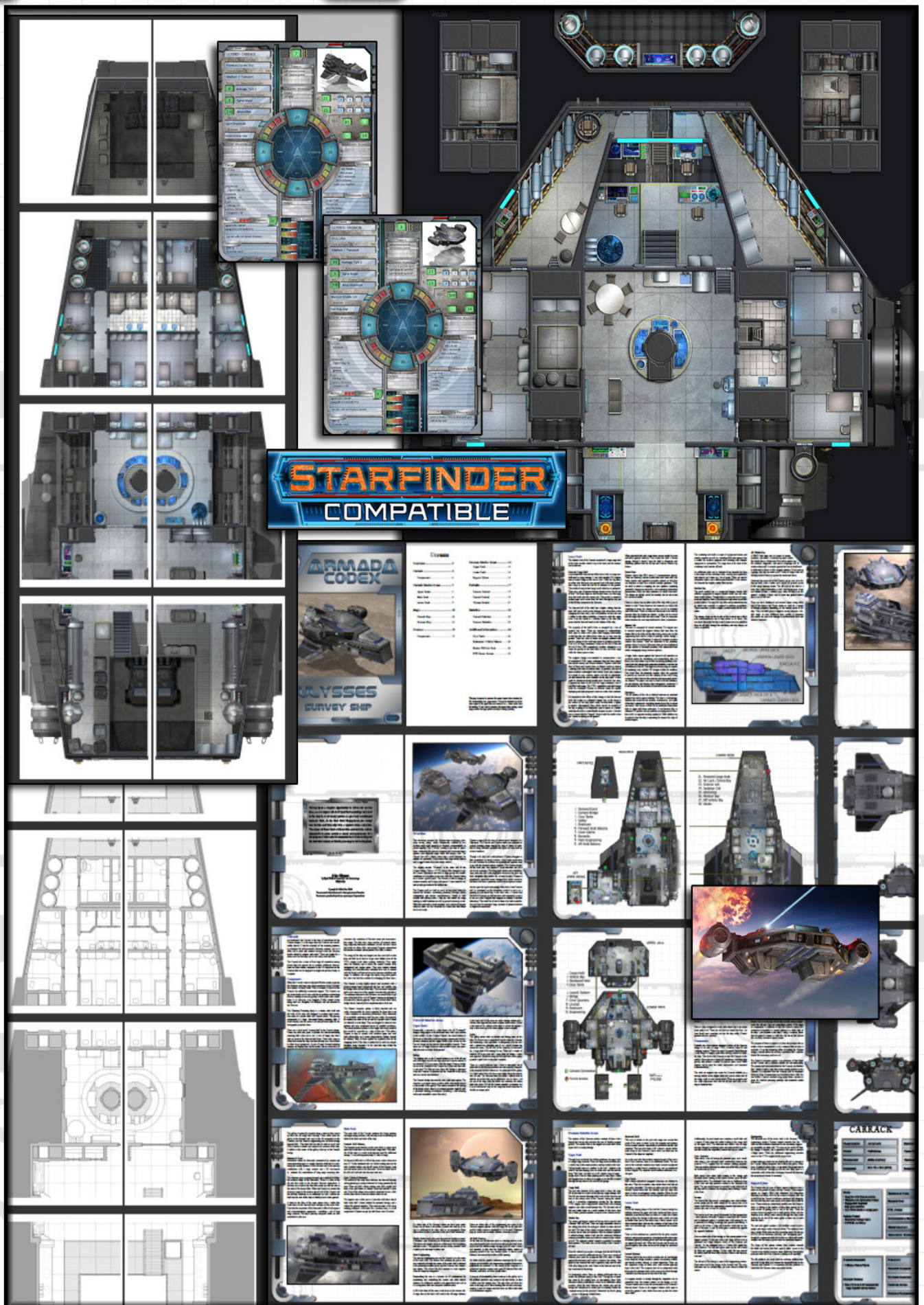
This material may not be distributed without permission of the author.

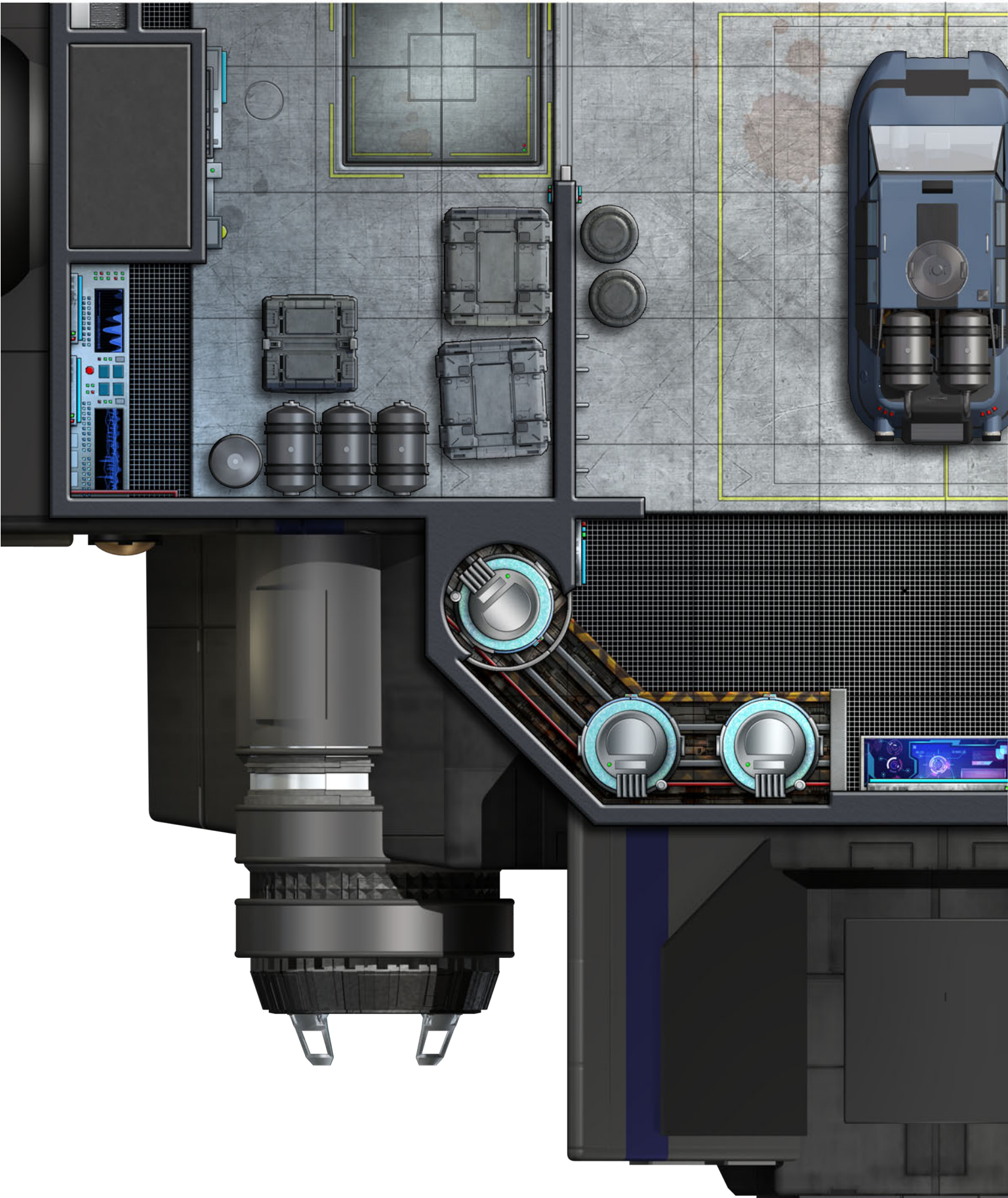
The purpose of this document is to show you what you can expect should you choose to invest in this issue of the 0-hr Armada Codex. This issue presents the Ulysses-class planetary survey vessel, which consists of two integrated ships that function well together or apart. The product consists of a main book, map pages book, uncut map images, and Starfinder content. Specifically, this is what is shown in this brief demo document:

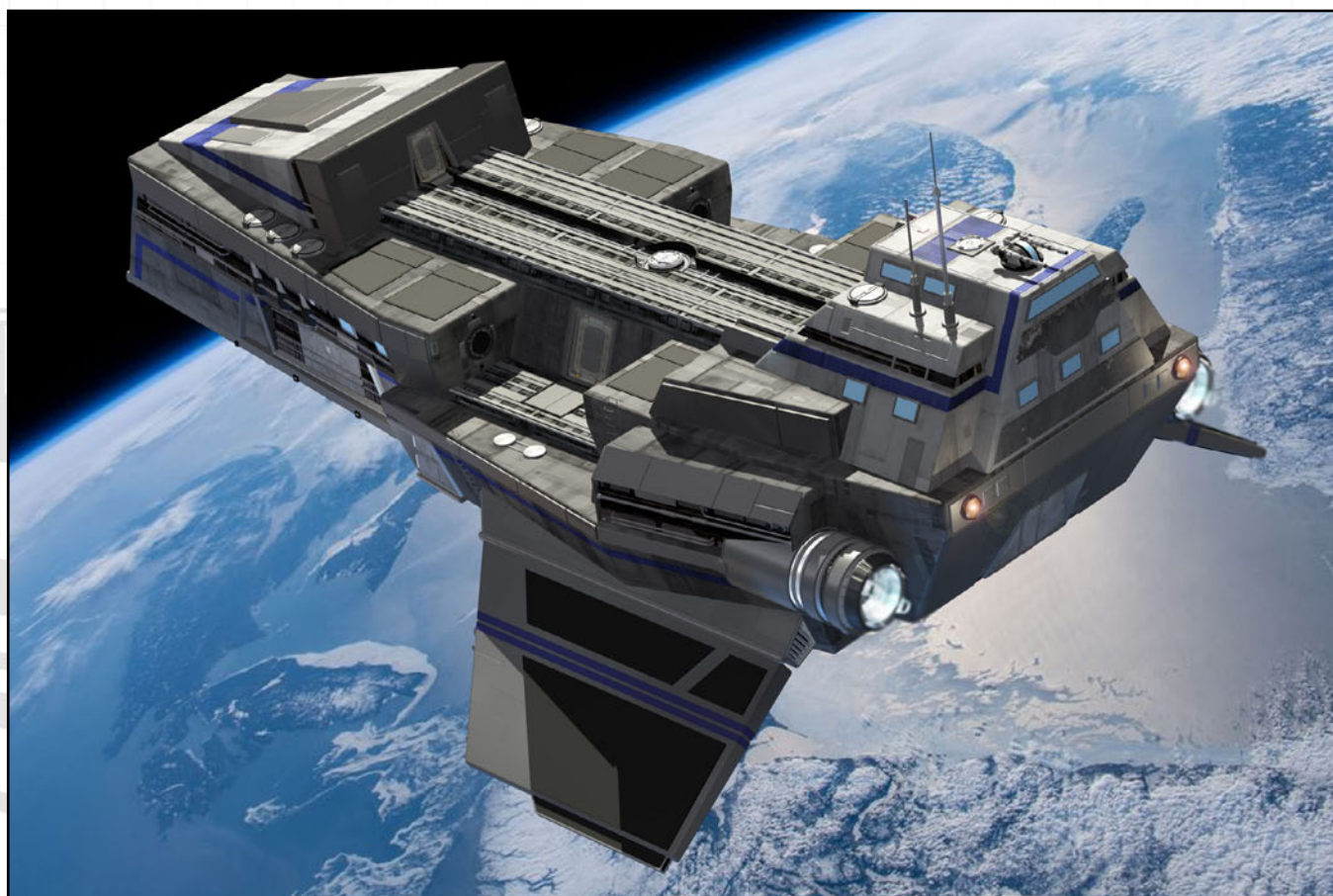


- **Page 2 (lower right): Main Book.** An overview of the ships, components, and statistics is provided. Each area of each vessel is enumerated and described. Rendered images are included throughout.
- **Page 2 (left): Map Book.** The map book provides tactical maps (1 inch = 5 ft.) for the interior areas of the ships. The pages are designed to be printed out and laid edge to edge. Layers are used so that certain map elements (like the grid, cargo, or the black and white version of the map) may be toggled on and off as desired.
- **Page 2 (upper right): Uncut Maps.** Complete deck-plans are presented in a single giant image, layered so that the grid, black and white version, and so on can be toggled on or off. It includes a light background good for printing, and a dark background good for display on a computer or with a projector. Single layer jpeg images are also included for VTT use.
- **Page 3:** This is a sample page from the map book. The layers are live in this demo document.
- **Page 4:** Displayed here is a sample of some rendered art from the main book.
- **Page 5:** This is a copy of the product overview from the sales web page.

Thank you for taking the time to explore this product line. I hope that these ships can find a place in your fleet!







0-hr Armada Codex

Ulysses

The Ulysses-class long-range planetary survey vessel consists of two medium-sized craft designed to function independently or joined together. The “Carrack” section is the base of operations, containing the primary scanning and communications systems plus spacious cargo holds and science labs. The Carrack has half a dozen cabins and a small barracks for another six personnel. It also carries four large survey drones and a rugged Rottweiler-class utility vehicle.

The slightly smaller “Dromon” is the other half of the Ulysses design. This is a VTOL heavy lifter designed to get the Carrack planetside and back in high gravity and extreme conditions or to explore on its own. The Dromon is also in charge of mission security and is rather well-armed. It has bunks for six and an anti-grav Air Boat for surface travel.

The Ulysses craft are built to excel far beyond the frontier; conducting planetary surveys, stellar cartography, and reconnaissance. Useful in both civilian and military roles – they are well suited for cargo hauling or relief missions as well as general mercenary work. With their cryo tanks, ample supplies, and a variety of support vehicles, there are few missions for which this self-reliant duo is not ready.

The Ulysses package contains several highly detailed PDF files and images:

- Main Book
 - o 27 page PDF file detailing the interior areas of the ships and their capabilities.
 - o Contains 3D rendered scenes as well as orthographic views.
 - o Background, art, and text are on different layers for custom display and printing.
- Map Pages
 - o 38 page PDF file containing complete interior maps at 1 inch = 5 foot scale.
 - o Divided into pages for easy printing in full color or printer-friendly black and white.
 - o Selectable layers include: 1-inch grid, black & white version, and optional cargo/vehicles.
- Uncut Map Images
 - o Two PDF files containing large, uncut images of the deckplans for the ships.
 - o Includes a 36x36 inch image of the Carrack and a 20x30 image of the Dromon.
 - o Select either a light or dark background (for printing or projection/display).
 - o Includes layers for grid, black & white version, optional cargo, and background choice.
 - o Flat jpeg images, grid-aligned, on a dark background are provided for VTT use.
- Starfinder Statistics
 - o Custom Starfinder stat sheets are provided for both sections of Ulysses
 - o The Carrack: a tier 7, medium-sized survey ship
 - o The Dromon: a tier 8, medium-sized VTOL lifter

Sample documents and art, as well as poster maps, ships miniatures, and a whole fleet of additional Starfinder sheets (including form-fillable and black-and-white versions), are available at **0-hr.com**.

Thank you for looking over Ulysses. I hope that this rugged ship can help bring your campaign to life!