

FUTURE ARMADA

DELUXE STARSHIP DESIGNS

DEMO



VANGUARD STATION



Requires the use of the d20 Modern™ Roleplaying Game, published by Wizards of the Coast, Inc.



Demo Document for Vanguard Station

by Ryan Wolfe of “zero hour” art & technology

0-hr.com

Future Armada: Vanguard Station is copyright
© 2006, Ryan Wolfe.

Overview

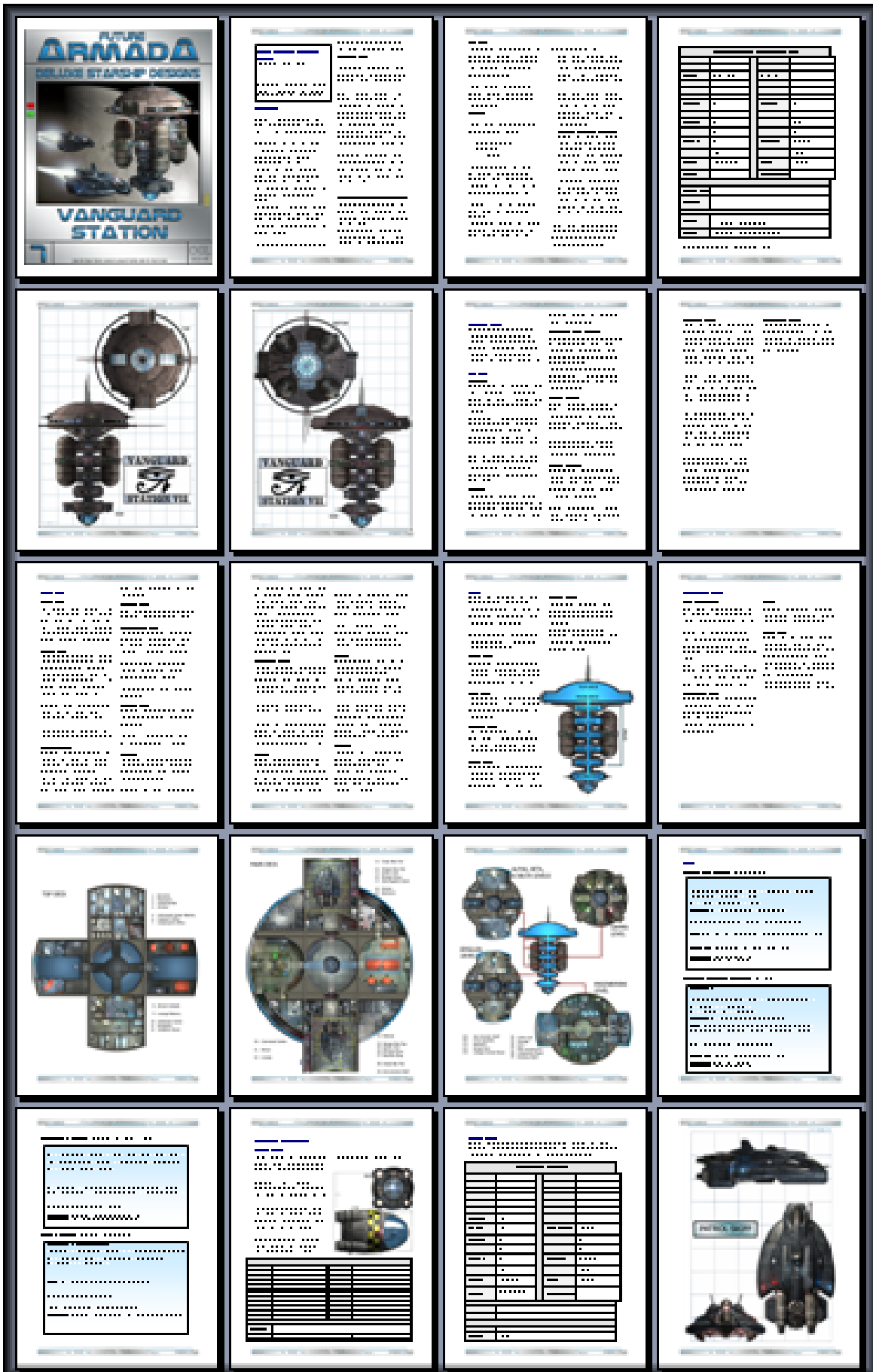
The purpose of this document is to show you what you can expect should you choose to invest in *Future Armada: Vanguard Station*. The images on the following pages are low-resolution “print-preview” screen captures meant to provide a general idea of what is inside each book.

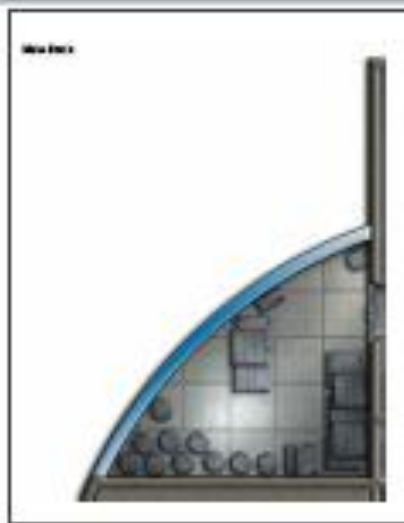
Specifically, this is what you’re looking at:

- **Page 3:** Main Book. This provides OGL statistics for the ship and crew. Brief descriptions are given for each area of the station, and composite maps are provided so it is easy to put the pieces together. Statistics and maps are also provided for the patrol skiffs and escape pods onboard.
- **Page 4:** Color Maps. The map book provides tactical maps (1 inch = 5 ft.) for the interior areas of the station. The screen shot shows a sampling of the pages, laid out like they would be when assembled.
- **Page 5:** Printer Friendly Maps. A black-and-white version of the color map book is provided for those people who don’t have access to a color printer.
- **Page 6:** Sample Map. This is a single page from the color map book, ready to be printed out and used with miniatures. The maps are designed to be laid end-to-end as needed.
- **Page 7:** Bonus Art. Two of the rendered 3D exterior views are shown. The actual pictures are 800x600 jpeg images. The product also includes giant jpeg images at 150 dpi

The .zip file also includes giant, 150 dpi jpeg images of the composite maps. So if you have the hardware, you can print out the maps on one big sheet of paper.

Thank you for taking the time to consider this product. I hope that *Vanguard Station* can become a backdrop for your adventures, wherever they may take you.

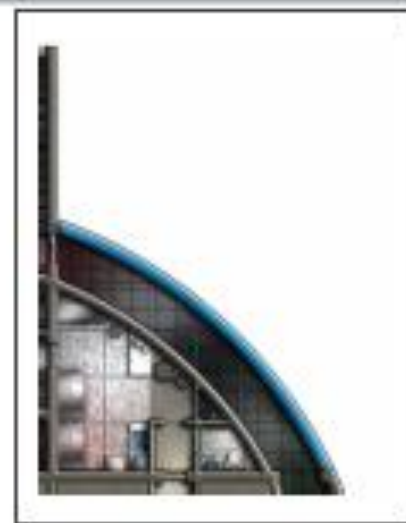




1



2



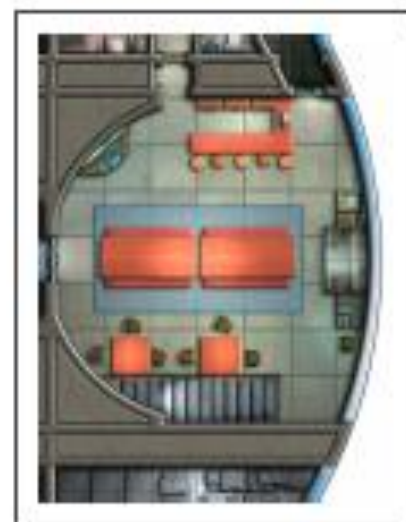
3



4



5



6



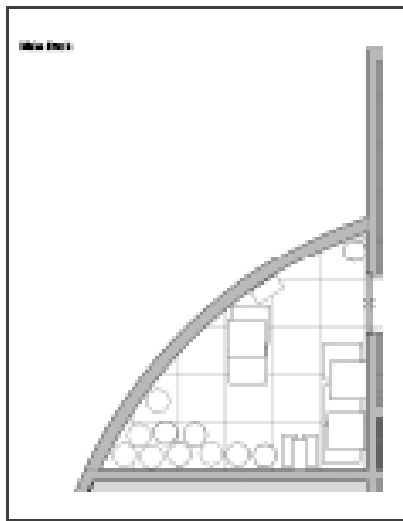
7



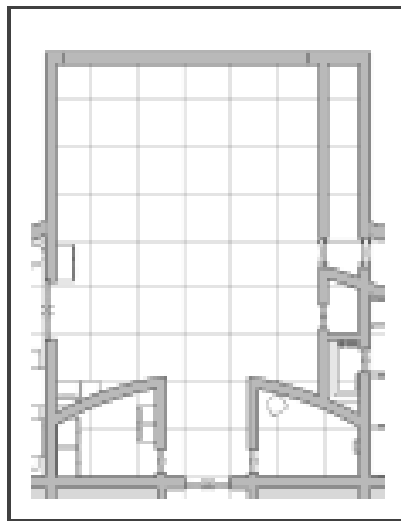
8



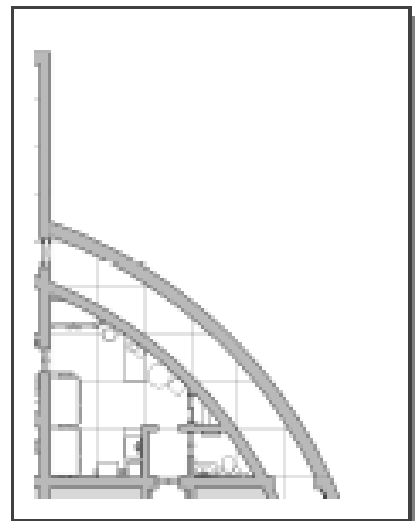
9



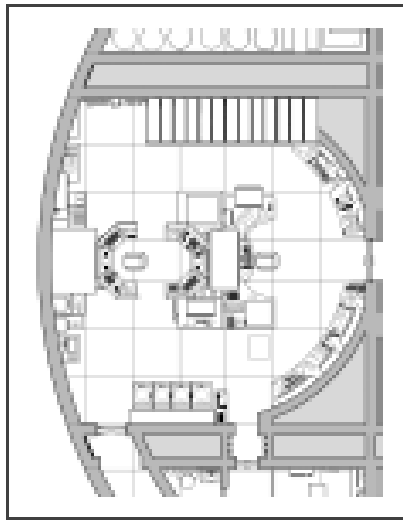
1



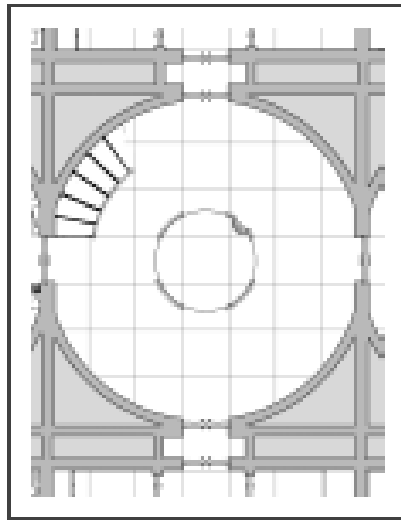
2



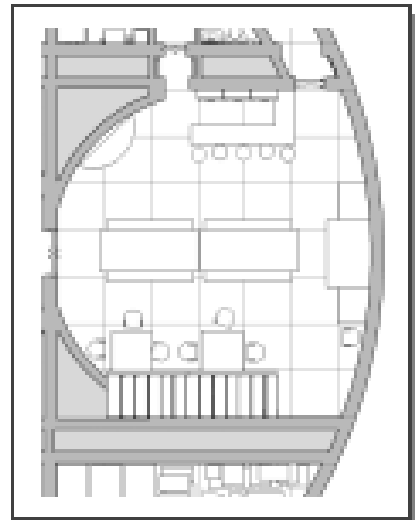
3



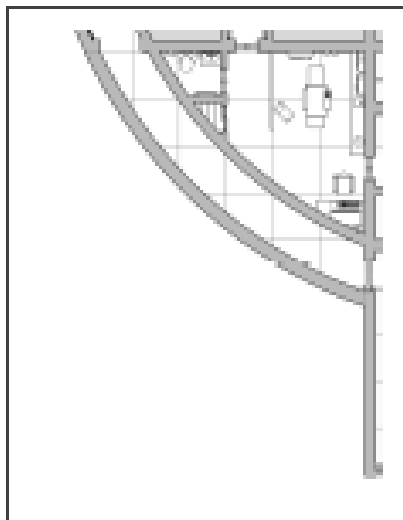
4



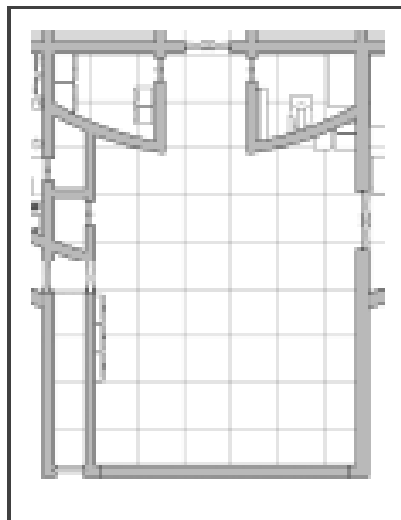
5



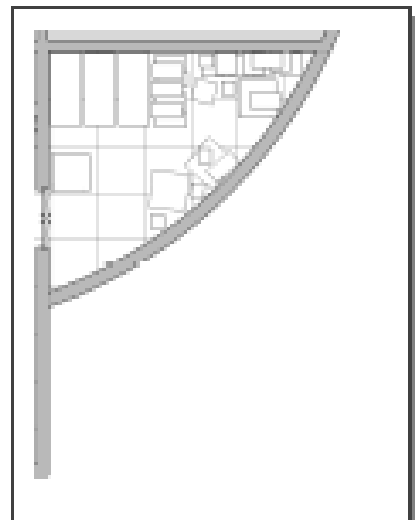
6



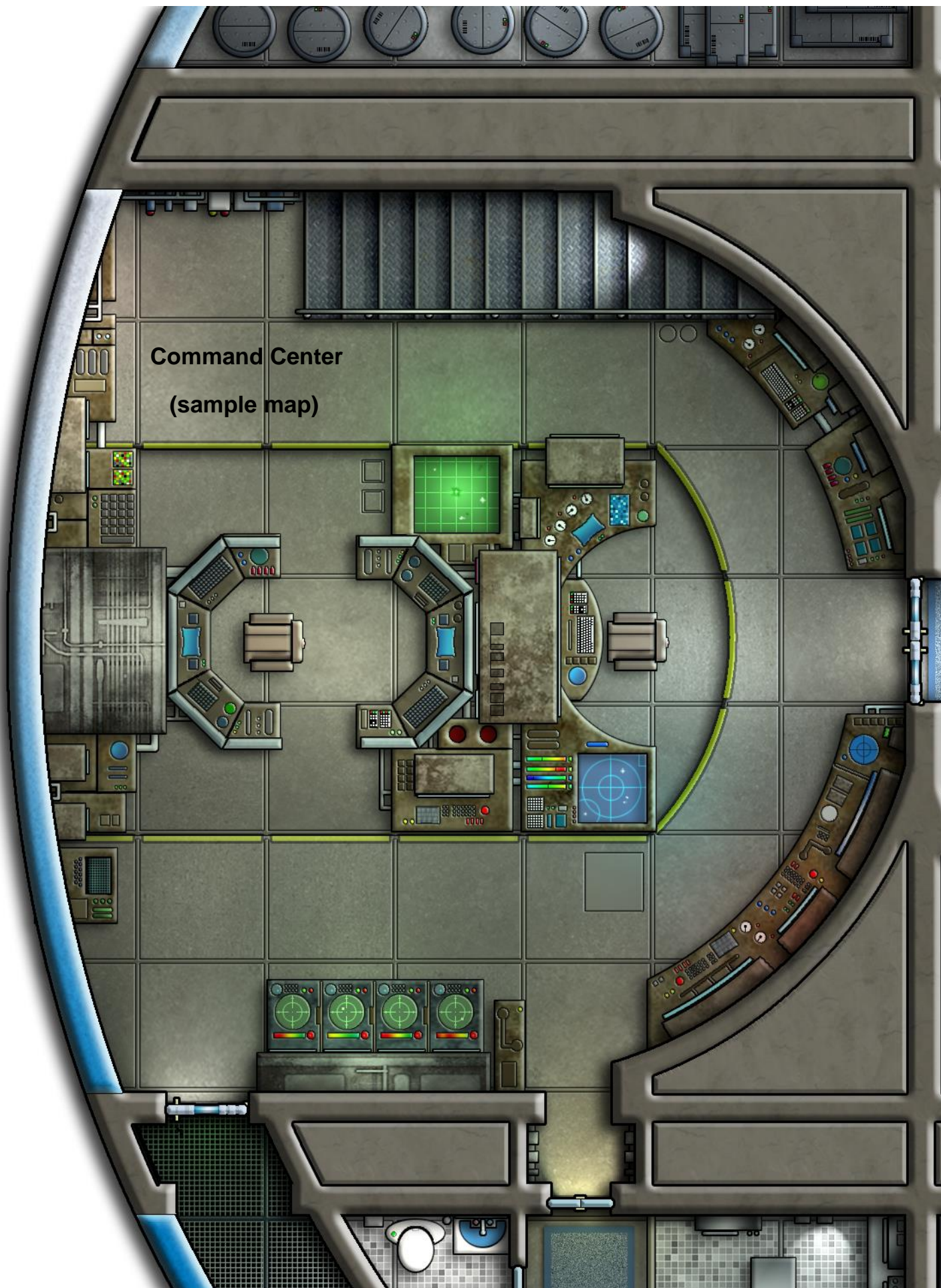
7



8



9



Bonus Art



VANGUARD STATION

ConFed Security Outpost

This Vigilance-class listening post was designed as a deep-space station that could serve a variety of functions. The small, PL-7 outpost is just over 160 feet tall and houses a permanent crew of 10. There are also barracks and facilities provided for 16 additional personnel or guests

Have you ever hesitated to have space-faring characters arrested because you don't have a detention center ready to receive them? Well, worry no longer! Vanguard Station VII is one of twelve such outposts used as a base of operation by ConFed Security - the law enforcement officers of the space lanes. Not only does the station have a pair of armed patrol craft, but it also has a dedicated detention center and full compliment of trained personnel.

The station lounge and administrative offices are open to the public. The food is only re-hydrated government fare, but the drinks are good and the patrons understandably well behaved. By re-using the barracks map page in place of the detention center, the same station can represent a civilian establishment (like a truck stop in space) or even a military garrison or supply depot. Whether the characters are just visiting (voluntarily or not), or looking for a place to call their own, this little station can fit the bill.

The .zip file contains the following:

- Overview
 - 21 page PDF file detailing the station, interior locations, and personnel.
 - Open Game License stats provided for the vessel and crew, as well as the shuttles and escape pods.
- Map Book
 - Full-color 26 page PDF file containing complete interior maps.
 - Includes miniature-scale maps for tactical combat.
 - Broken into pages for easy printing.
- Printer friendly, grayscale version of the map book.
- Miniature-scale composite maps of the station interior.
 - A 22x22 inch, 150 dpi, color JPEG image of the top deck.
 - A 22x28 inch, 150 dpi, color JPEG image of the main deck.
 - A 14x10 inch, 150 dpi, color JPEG image of the engineering deck.
 - (Other levels along the "spine" already fit onto a single page.)
- "Bonus Art" directory with rendered images of the station and patrol skiffs

Starfinder stats, demo documents, and art are available free at **0-hr.com**

This small space station can serve as a ready-made setting for game masters or a base of operations for players. While OGL statistics are provided for maximum compatibility, they kept are separate for easy modification or replacement. Whatever your game system, Vanguard Station can serve as an interesting place to visit, or a secure place to rest and recuperate between adventures!