

SHIP NAME

MAKE / MODEL / CLASS

SIZE & FRAME

SPEED

MANEUVERABILITY

RATING

HYPERSPACE ENGINE

PCU

POWER CORE

SHIELDS

SENSORS

PORT WEAPONS

CREW

CAPTAIN

ENGINEERS

GUNNERS

PILOT

SCIENCE OFFICERS

NOTES



COMPLEMENT

MODIFIERS

TIER

TURRETS

FORWARD WEAPONS



AC



= 10 +



+



+



+



TL



= 10 +



+



+



+



HULL



THRESHOLDS

DT



CT



STARBOARD WEAPONS

SYSTEMS

EXPANSION BAYS

CARGO & PASSENGERS

FORWARD

PORT

STARBOARD

AFT

AFT WEAPONS

01 - 10

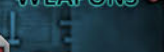
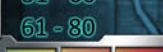
CRITICAL DAMAGE



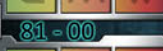
11 - 30



31 - 60



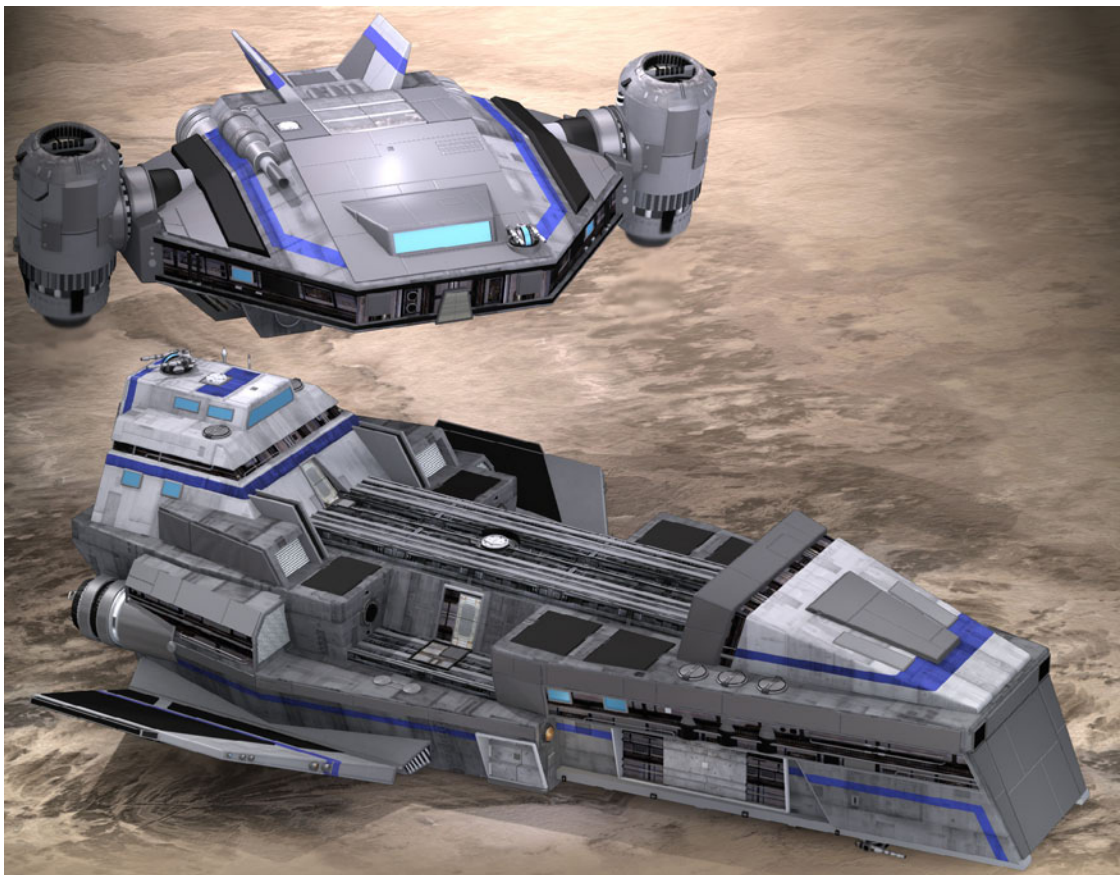
61 - 80



81 - 00



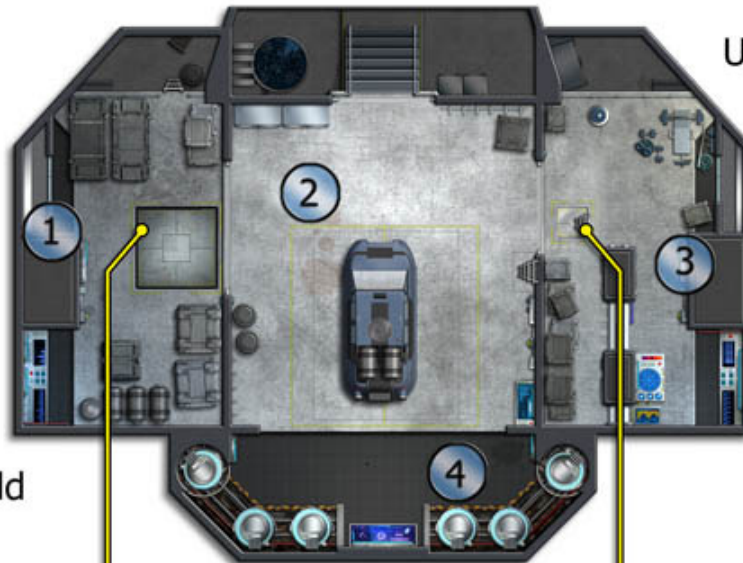
POWER CORE



As part of the Ulysses integrated survey vessel, the Dromon can join with the Carrack section and function as a single ship. In that case the combined ship moves with speed 8, pilot +0, and turn 2 (average maneuverability). Apply hits taken to either ship randomly in a given arc.



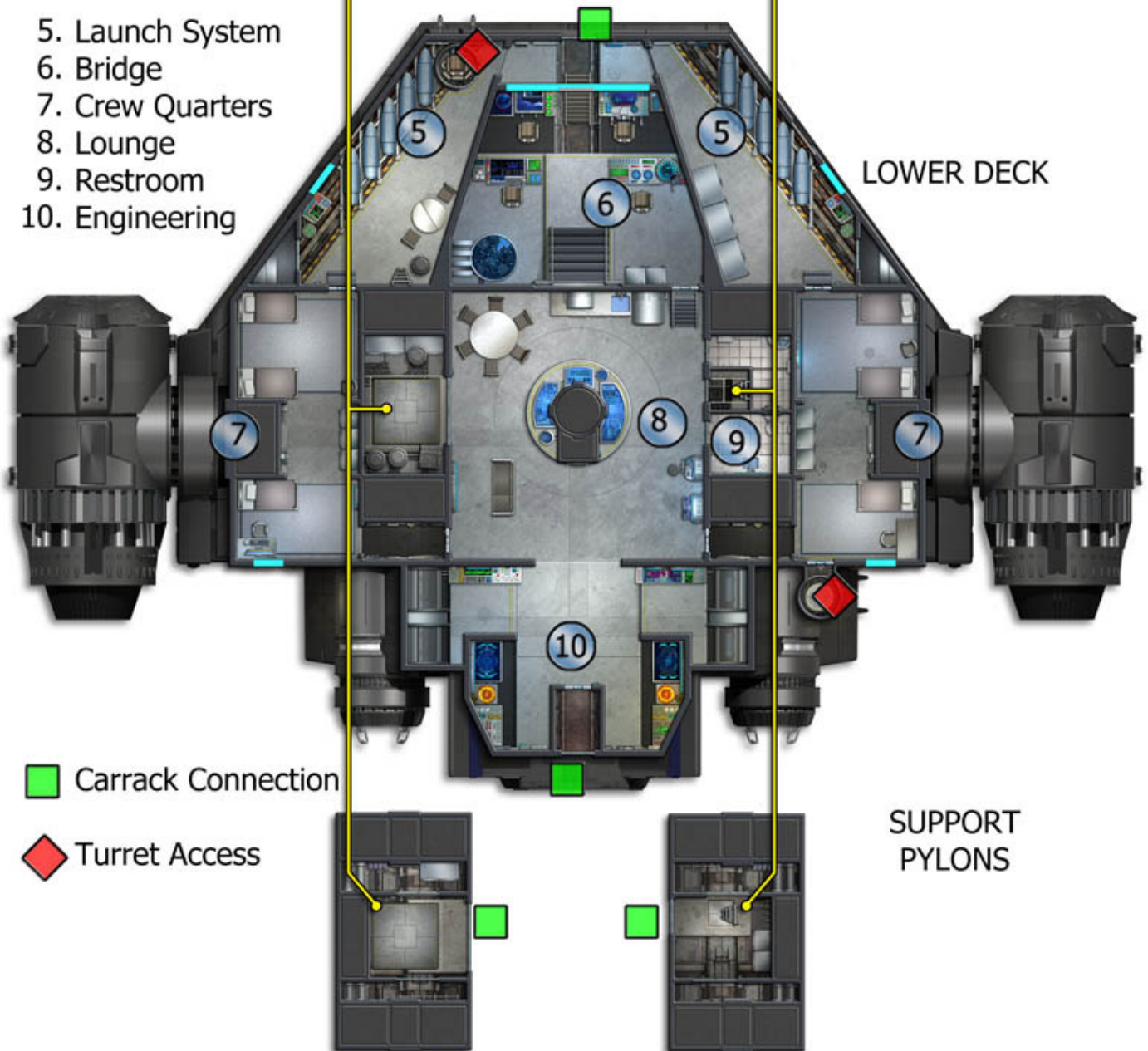
UPPER DECK



1. Cargo Hold
2. Vehicle Bay
3. Starboard Hold
4. Cryo Tanks

LOWER DECK

5. Launch System
6. Bridge
7. Crew Quarters
8. Lounge
9. Restroom
10. Engineering



■ Carrack Connection

◆ Turret Access

SUPPORT
PYLONS