

SHIP NAME

MAKE / MODEL / CLASS

SIZE & FRAME

SPEED

MANEUVERABILITY

RATING

HYPERSPACE ENGINE

PCU

POWER CORE

SHIELDS

SENSORS

PORT WEAPONS

CREW

CAPTAIN

ENGINEERS

GUNNERS

PILOT

SCIENCE OFFICERS

NOTES



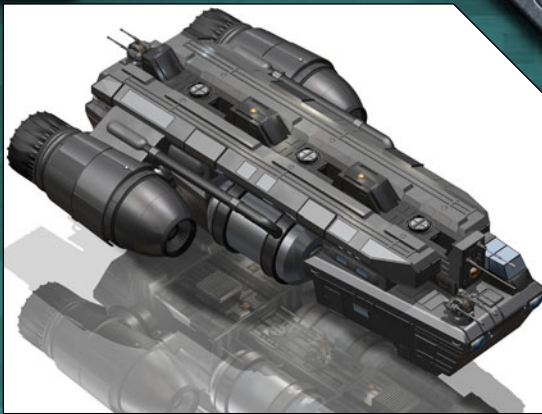
COMPLEMENT

MODIFIERS

TIER

TURRETS

FORWARD WEAPONS



AC



= 10 +



+



+



+



PILOT

ARMOR

SIZE

MISC

TL



= 10 +



+



+



+



PILOT

COUNTER

SIZE

MISC

HULL

TOTAL



CURRENT



THRESHOLDS

DT



CT



STARBOARD WEAPONS

SYSTEMS

EXPANSION BAYS

CARGO & PASSENGERS

FORWARD

PORT

STARBOARD

AFT

AFT WEAPONS

01 - 10

CRITICAL DAMAGE

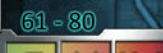
LIFE
SUPPORT

11 - 30



SENSORS

31 - 60



WEAPONS

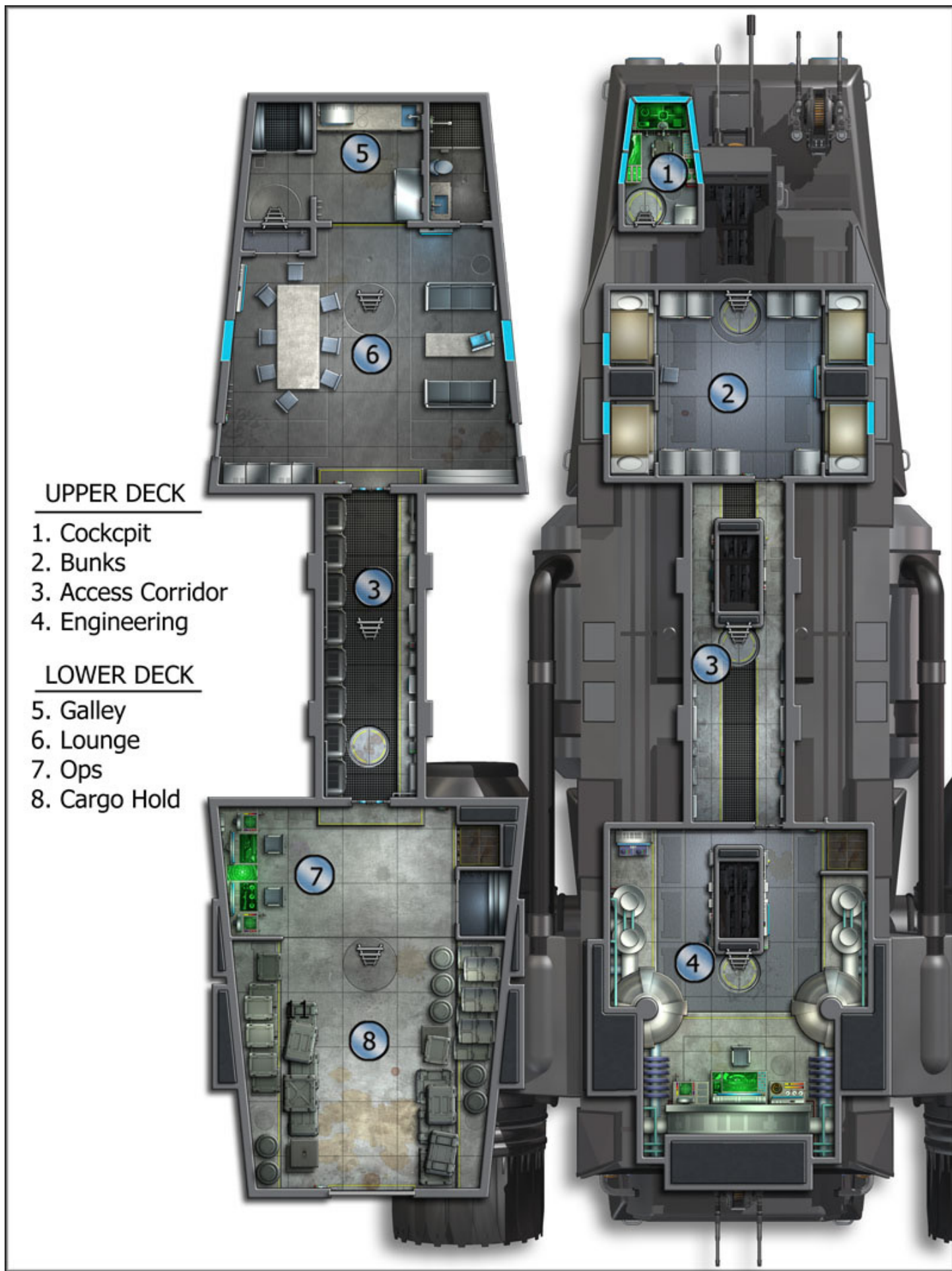
61 - 80



ENGINES

81 - 00

POWER
CORE





The Arkadin-class ultralight carrier is designed to carry a trio of Sasori-class heavy fighter. Hatches and docking couplings on the ventral surface of the fighters allow them to be support by, and entered from, the carrier while in space.

